

Zippy Art Purse Tutorial



WHAT YOU WILL NEED:

9" x 12" piece of fabric (interior pocket)

9" x 8.5" piece of fabric (bottom of zipper pocket)

4" x 9" piece of fabric (top of zipper pocket)

6" x 9" piece of fabric (zipper pocket lining)

9" x 14" piece of fabric (outside of purse)

9" x 14" piece of fabric (inside of purse)

7" or 8" zipper

9" x 14" piece of interfacing (I used fusible fleece)

Canvas strapping or 2 pieces of fabric 3.5" x 12"

Fabric scrap for applique or piece of felt

Steam a seam or other double sided fusible interfacing (to apply applique)

Sewing machine

LET'S GET STARTED.....



Now that you have all your pieces cut you are ready to get down to business. Get out that iron.



If you are going to do an applique on the front of the purse, go ahead and do it now while the iron is nice and hot. I decided to use an initial, so I cut out the letter from fabric placed it on the steam a seam (double sided fusible interfacing) and cut around the letter. I peeled off the paper and ironed it to the front piece of fabric. Make sure you follow the directions on the back of the interfacing: I folded the fabric in half so that I would know where to place it.



Then zig zag around the edges of the letter to secure in place.



If you prefer you can also handstitch a design using felt like the example below.



Once you have the applique finished go ahead and iron the interfacing to the back or wrong side of the appliqued piece. You will want to follow the directions on the back of the interfacing for this step as well.



Now you can put away the iron and start assembling your art purse.

Let's tackle the zipper pocket first. Take the 9" x 8.5" piece that you have ironed and place the zipper between the .75" folds that you made.



Now pin it in place.



If it makes you more comfortable, go ahead and topstitch all the way across this piece using your zipper foot. I chose to pin both top and bottom and sew it all at once.

Pin the top piece in place. The fold should be on top of the zipper on this piece.



Topstitch using your zipper foot. I find it easier to start with the zipper unzipped a little bit. Then when I get close to the zipper pull, I make sure my needle is down and foot is up and I pull the zipper past the zipper foot.



This is what it will look like. Do the same thing on the top part too.



This is what it will look like when it is all topstitched.



Now take the 9" x 12" piece that you ironed in half and top stitch the fold edge. You can see in this photo that the pocket has been topstitched.



Now pin the inside pocket to one of your 9" x 14" pieces lining up the raw edges. Place the 6" x 9" piece right side up under the zipper pocket and pin it to the inside piece as well. You want to make sure that the piece does not show when the zipper pocket is laying flat.



This is what it should look like.



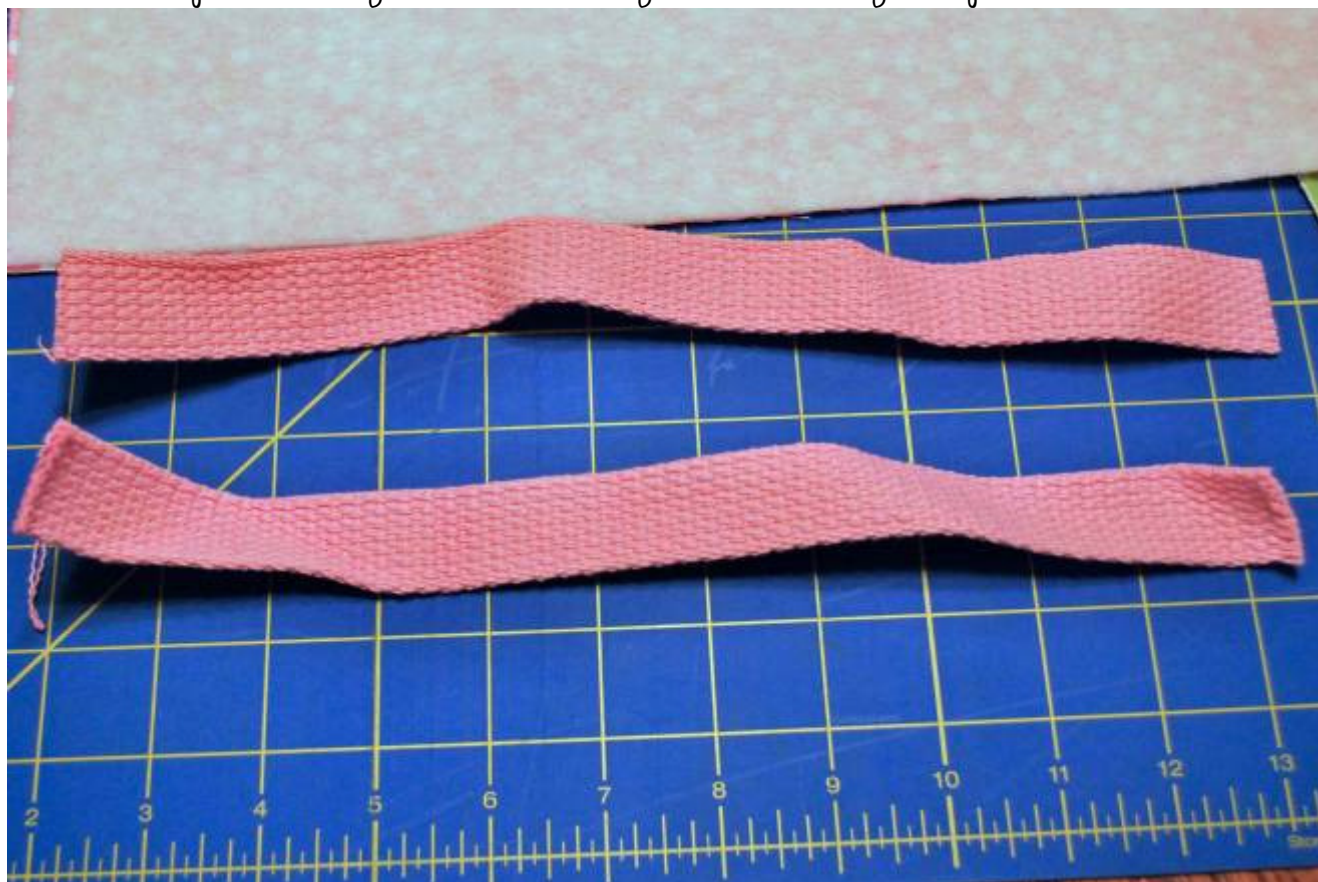
Now go ahead and baste around the outside securing both pockets in place. I used a $\frac{1}{4}$ inch seam allowance. Here's what it looks like.



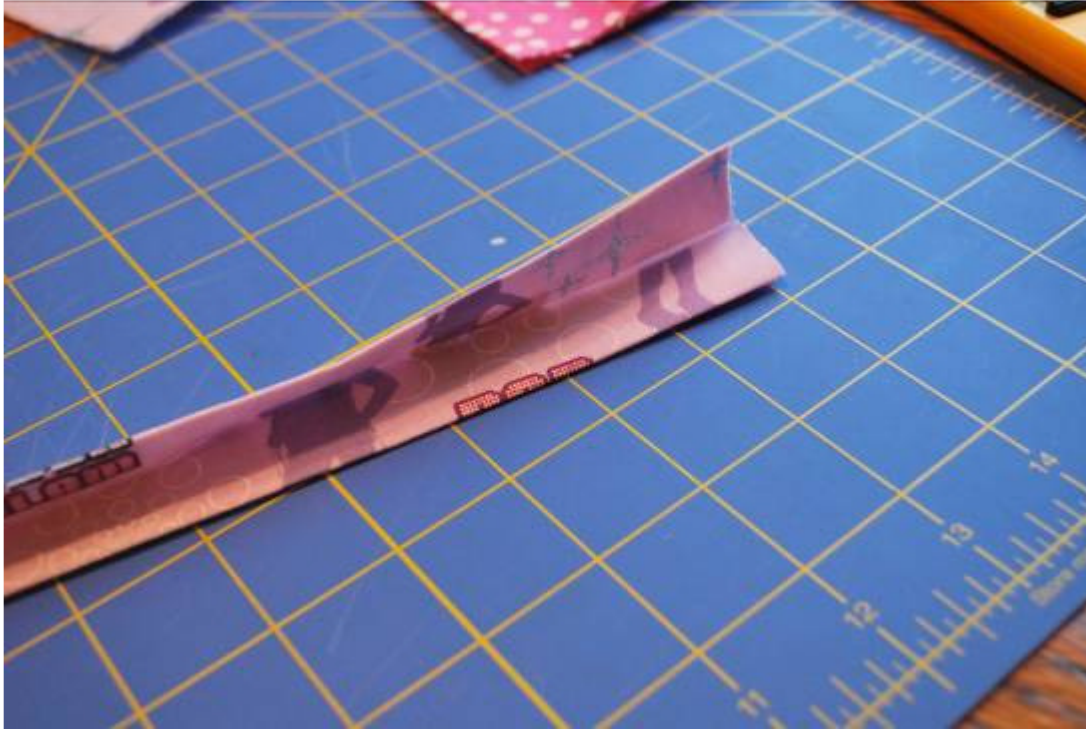
Then topstitch across the bottom of the zipper pocket. Make sure that you catch the bottom of the lining.



If you are using canvas straps go ahead and grab your two strips.



If you are using fabric, you are going to iron your pieces in half and then iron each side in towards the fold in the middle. Like this.



Once you have both pieces ironed, it should look like this. Sorry for all the fabric changes.



Then topstitch along both sides.



Now take your straps and pin them to the right side of the front piece. I placed my straps about 2 inches in on both sides. Then baste them in place.



If you would like to add an elastic and button closure, now's the time to do it. Pin the elastic between the straps that will be on the back and baste it in place.



Now place the outside and inside pieces together with right sides facing each other. The interfacing will be on the outside. Stitch around all sides using a 1/2 inch seam allowance and leaving a 2 inch gap between the two straps for turning. If you are using an elastic closure make sure you leave the gap between the opposite straps.



Clip the corners and trim up any strapping that may be showing. Then turn through the 2 inch opening between the straps. Make sure to poke out the corners to make it nice and square. Then topstitch all the way around the purse making sure to close up the opening between the straps.



If you are using an elastic closure, go ahead and sew a button to the front of the purse. It's a little tricky, but you can sew it on and conceal the stitches inside the pocket.



Now go make purses for every art enthusiast that you know.



Then stuff them full of markers, pencils, crayons, paper, and stickers.



This is for personal use only. Created by Jen Kline www.newgreenmama.com.